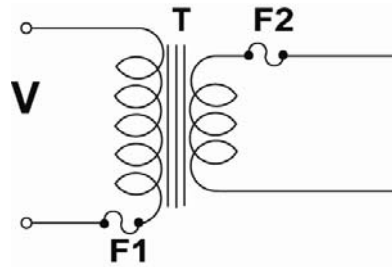


66A Series Adaptors

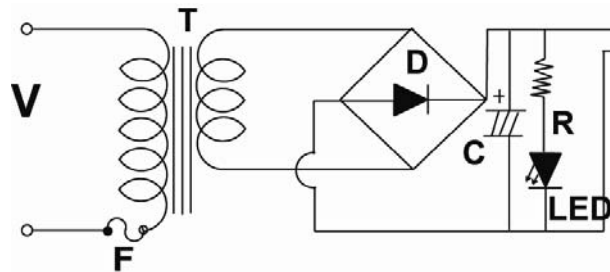
CIRCUIT DIAGRAMS



T1630S/T has an earth-wire connection from input to output.

(F1) Thermal Fuse: D115°C M20
(F2) Current Fuse: 5A 125V

P0935P25R only



INPUT

Rated AC Input Voltage	230 - 240V AC
Rated AC Input Frequency	50 Hz

OUTPUT

MODEL	T0935P25R	T1630A21 T1630S/T	T2420A21 T2420S/T
Nominal Output Voltage	9V DC	16V AC	24V AC
Maximum Load Current	3.5A	3.0A	2.0A
Maximum Output Power	31.5W	48.0W	48.0W

HOUSING DIMENSIONS

MODEL	T0935P25R T1630A21 T1630S/T (*)	T2420A21 T2420S/T
	139(L) X 83(w) X 73(H)mm	110(L) X 83(w) X 65(H)mm

*) Model T1630S/T is screwed to a 1mm thick metal baseplate 180(L) x 93(W)mm.
Four baseplate-mounting screws are also provided.

66A Series Adaptors
INPUT CORD

MODEL	
T0935P25R	2 x 0.75mm ² 18AWG LD flat double insulated 800mm flex with 2-pin AS/NZS3112:2000 mains plug
T1630A21	3 x 0.75mm ² 18AWG LD round double insulated 800mm flex with 2-pin AS/NZS3112:2000 mains plug
T1630S/T	3 x 0.75mm ² 18AWG LD round double insulated 800mm flex with 3-pin AS/NZS3112:2000 mains plug
T2420A21	2 x 0.75mm ² 18AWG LD flat double insulated 800mm flex with 2-pin AS/NZS3112:2000 mains plug
T2420S/T	2 x 0.75mm ² 18AWG LD flat double insulated 800mm flex with 2-pin AS/NZS3112:2000 mains plug

OUTPUT CORD

MODEL	
T0935P25R	2 x 0.75mm ² flat double insulated 1800mm flex
T1630A21	2 conductor round 18AWG x 1800mm
T1630S/T	3 conductor round 18AWG x 1800mm
T2420A21	2 conductor figure-8 18AWG x 1800mm
T2420S/T	2 conductor figure-8 18AWG x 1800mm

OUTPUT TERMINATION

MODEL	
T0935P25R	10-55-25 Right-angled DC output plug, centre positive
T1630A21	11-55-21 DC output plug
T1630S/T	Strip length 50mm, tinned length 5mm
T2420A21	11-55-21 DC output plug
T2420S/T	Strip length 50mm, tinned length 5mm

66A Series Adaptors

ELECTRICAL CHARACTERISTICS

Hi-Pot Test	4kV 50Hz for one minute between Input and Output circuit, no flashover or breakdown shall occur during the test.
Insulation Test	500V DC applied for one minute between Input and Output circuit, the insulation resistance shall not be less than 100MΩ.
Temperature Rise	29.44°C max, primary winding with output full load (R of R method).
Output Jack type	Stripped and tinned wire.
Output Jack Wire	2 conductor figure-8 AWG#18 x 1800mm stripped and tinned end.
Input Cord	2 x 0.75mm ² AWG#18 LD double-insulated 800mm flex with 2 pin AS/NZS3112:2000 mains plug.

MECHANICAL CHARACTERISTICS

Strain Relief Test	An 89N force is to be applied to the cord or output cord for one minute without displacement or deformation of its anchoring surface. The strain relief shall not be acceptable if there is any movement of the cord to indicate that stress on the connections would have resulted.
Drop Test	Three samples are to be dropped (free fall) three times in succession from a height of 914mm onto a hardwood surface. After completion of the drop test, each sample is to be subjected to the dielectric voltage withstand test as described above. No flashover or insulation breakdown shall occur.
Direct Plug-in Blade Secureness Test	Each blade and the grounding pin shall withstand a direct pull of 89N for two minutes without loosening.

AUSTRALIAN COMPLIANCE

Electrical Safety	Certificate number N16680
EMC	ACA Supplier Code N692 